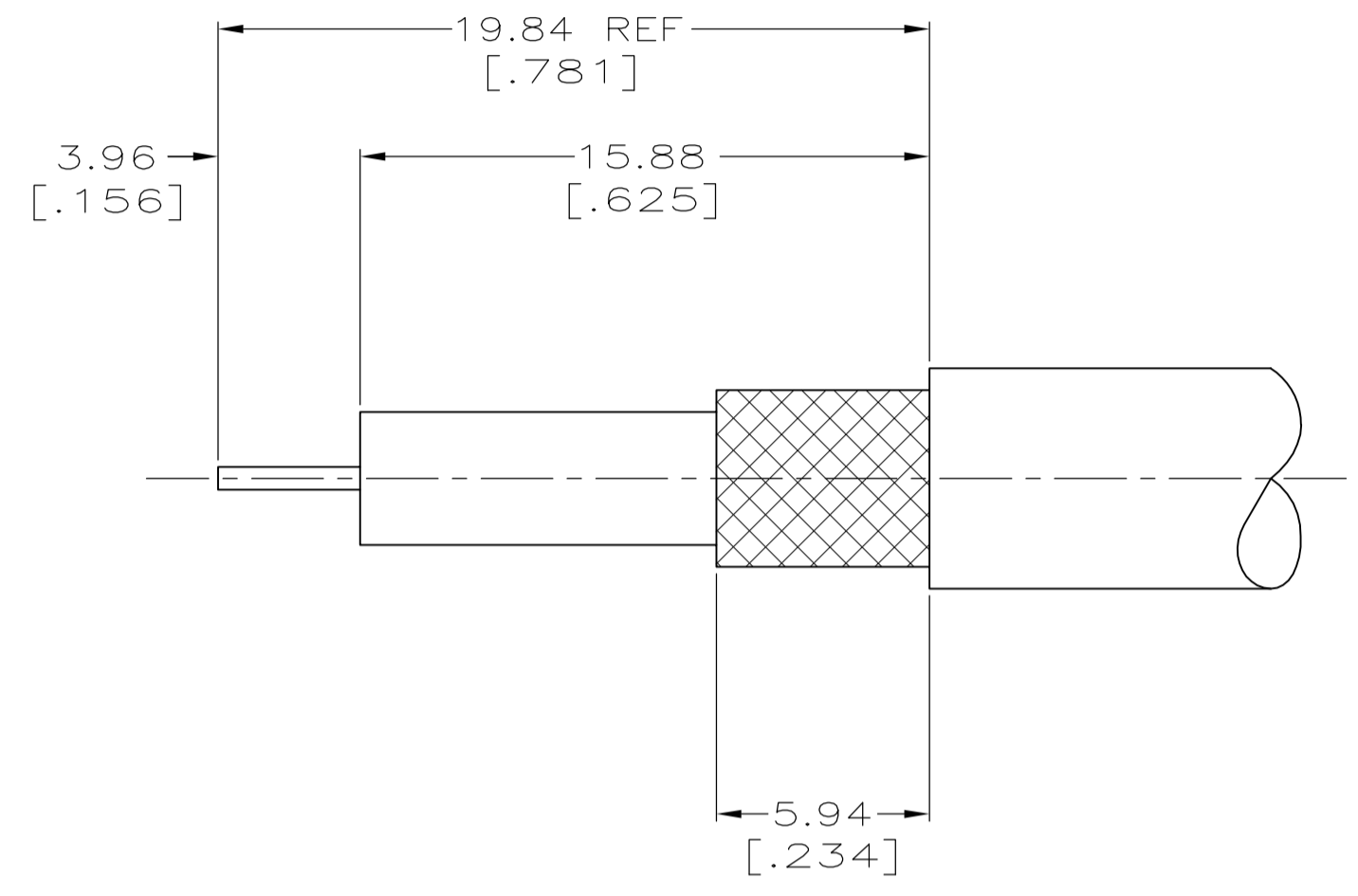
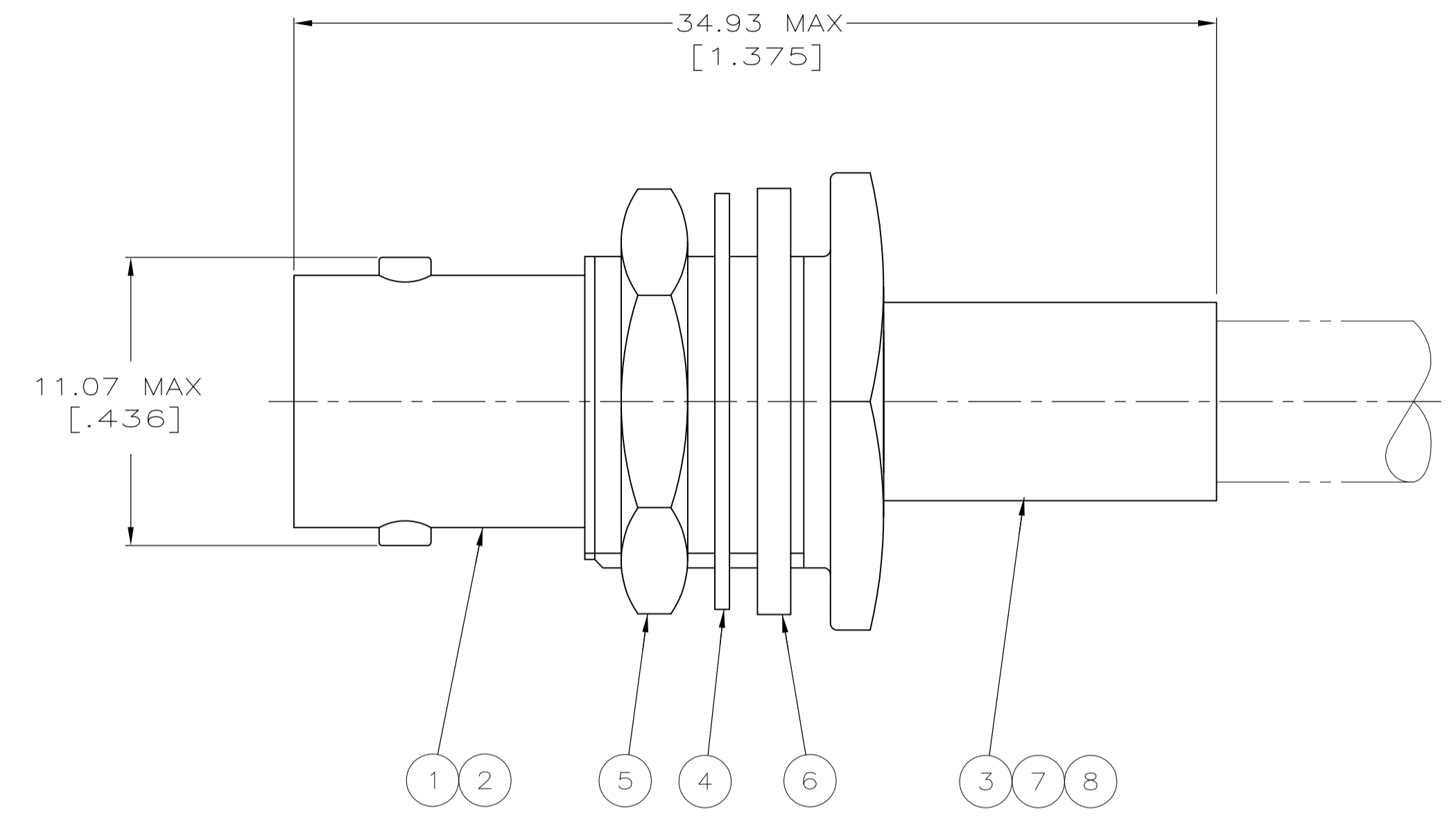
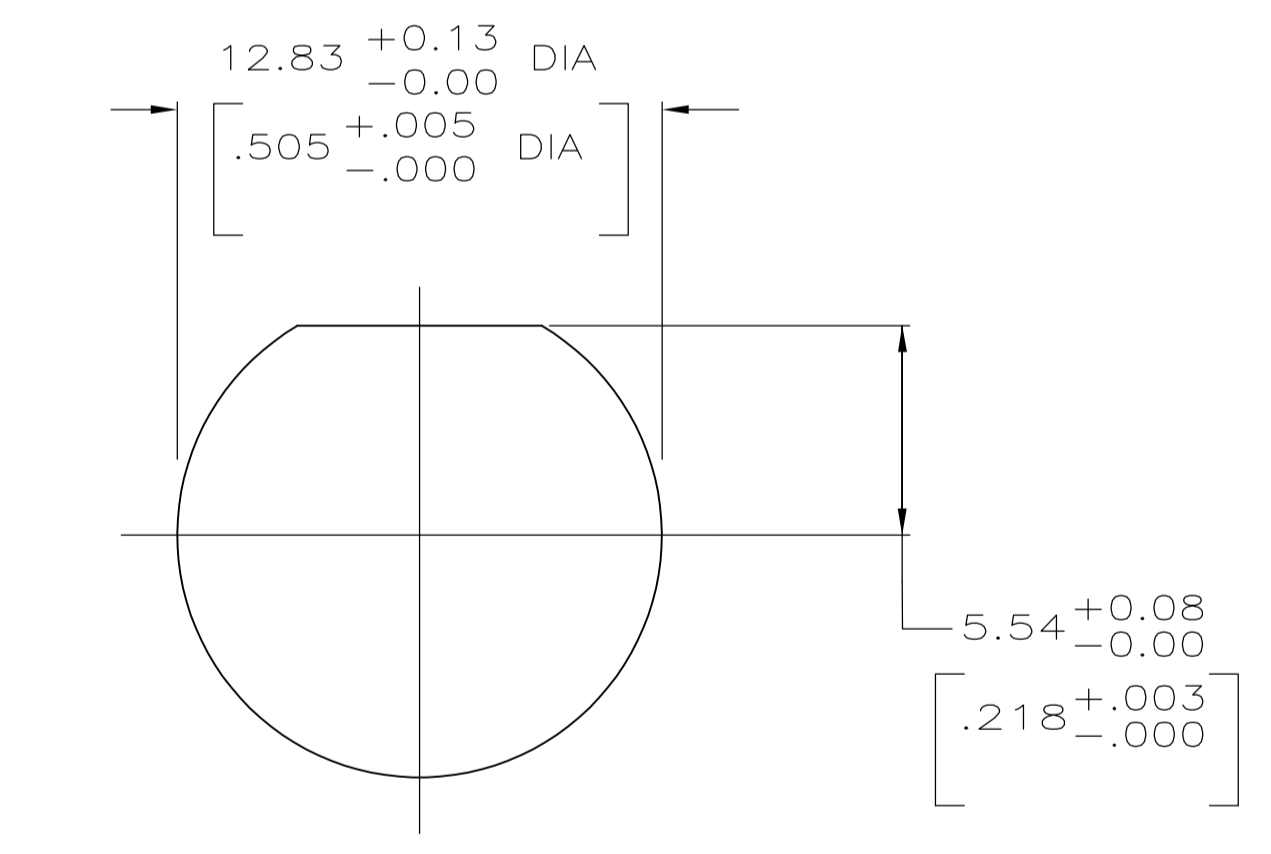


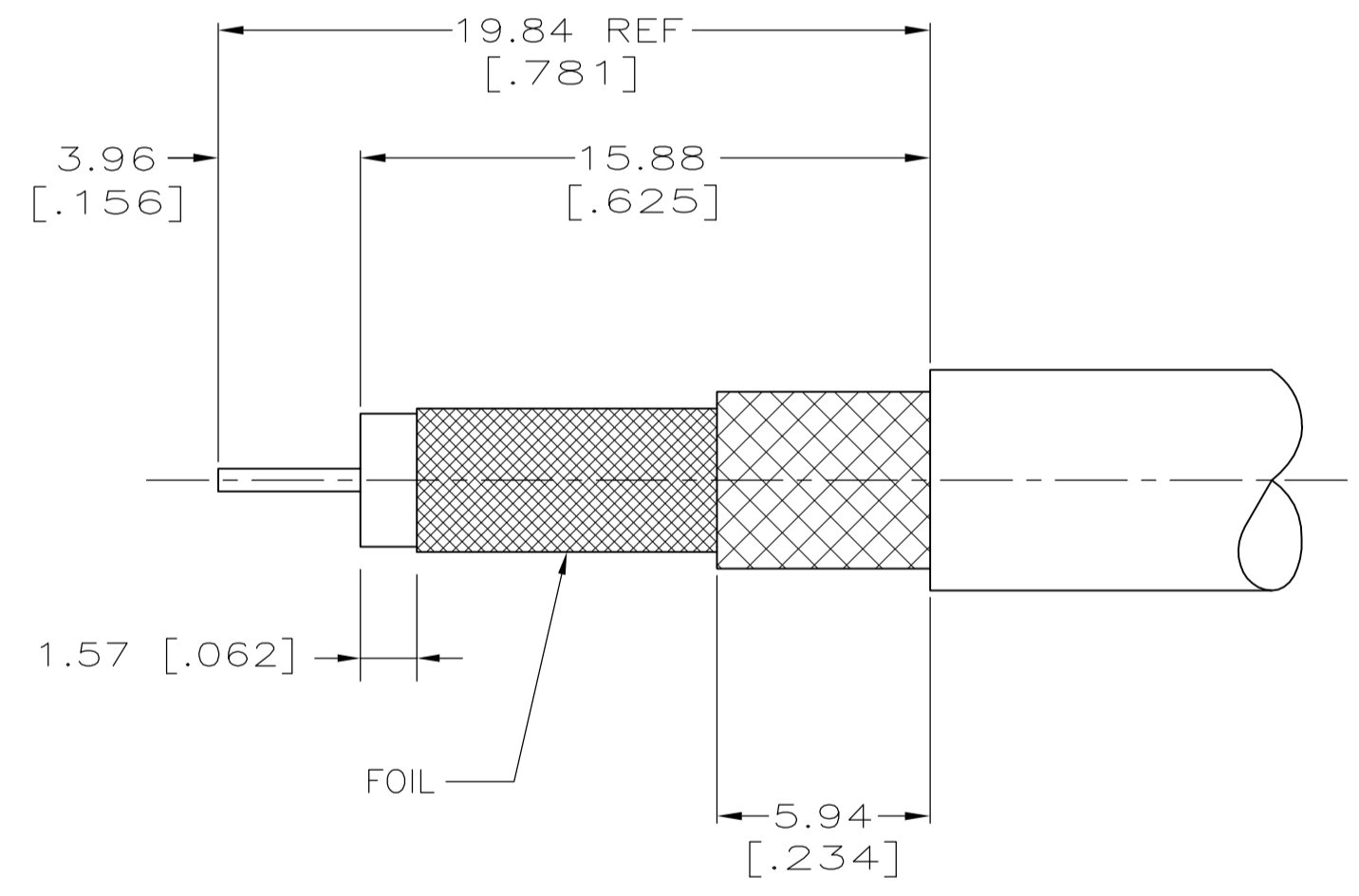
1. USE INSTRUCTION SHEET 408-9089
  2. MAXIMUM PANEL THICKNESS: 6.10 [.240]
  3. DIELECTRIC MUST WITHSTAND A 6 POUND PUSHOUT FORCE
- ⚠ USE WITH CRIMP TOOL 354940-1.  
 ⚠ USE WITH CRIMP TOOL 220190-1



RECOMMENDED STRIP LENGTH



RECOMMENDED PANEL CUTOUT



RECOMMENDED STRIP LENGTH FOR 5221221-9

⚠	AT&T 735A	58174-1	-	-	329633	1-1403077-9	1-329632-2	9-328666-2	221200-9	221255-3	5221221-9
⚠	BELDEN 9240, 9259, 9266	58085-1	-	-	329633	1-329631-2	1-329632-2	9-50428-0	2-221200-5	221255-2	5221221-7
⚠	RG-179/U, 179A/U, 179B/U, 187/U, 187A/U	58304-1	227194-2	222001-6	329633	1-329631-2	1-329632-2	9-328666-0	2-221200-0	221255-3	5221221-5
⚠	RG-59/U, 59A/U, 59B/U	58085-1	-	-	329633	1-329631-2	1-329632-2	9-50428-0	221200-3	221255-2	5221221-2
⚠	BELDEN 9248 AND MADISON 18AWG	58086-1	-	-	329633	1-329631-2	1-329632-2	9-50427-0	3-221200-2	221255-1	5221221-1
	CABLE	DIE SET	⑧ TUBING, PLASTIC QTY=1	⑦ TUBING, METAL QTY=1	⑥ GASKET QTY=1	⑤ JAM NUT QTY=1	④ LOCK WASHER QTY=1	③ FERRULE QTY=1	② CONTACT QTY=1	① JACK ASSEMBLY QTY=1	PART NUMBER

THIS DRAWING IS A CONTROLLED DOCUMENT.

DIMENSIONS: mm [INCHES]	TOLERANCES UNLESS OTHERWISE SPECIFIED:	0 PLC ± -	1 PLC ± -	2 PLC ± 0.41 [016]	3 PLC ± -	4 PLC ± -	ANGLES ± -
MATERIAL	FINISH	WEIGHT	SCALE 5:1	SHEET 1 OF 1	REV A1	CUSTOMER DRAWING	

DWN: J. HAVENER 24JAN2005  
 CHK: J. HAVENER 25JAN2005  
 APVD: J. LIPPERT 25JAN2005  
 NAME: Tyco Electronics Corporation, Harrisburg, Pa 17105-3608  
 PRODUCT SPEC: JACK, BULKHEAD, 75 OHM, BNC  
 APPLICATION SPEC: 108-12095  
 SIZE: A1  
 DRAWING NO: 00779  
 DRAWING NO: 5221221