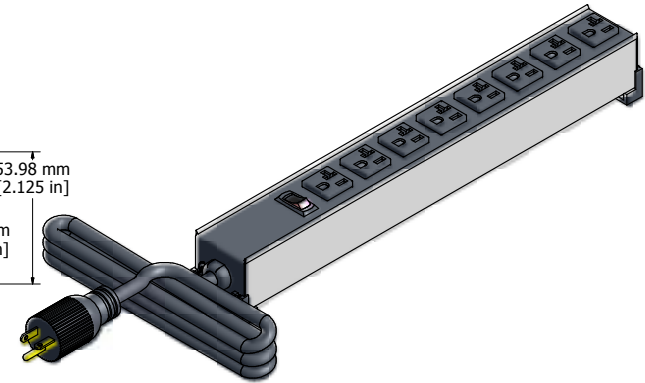
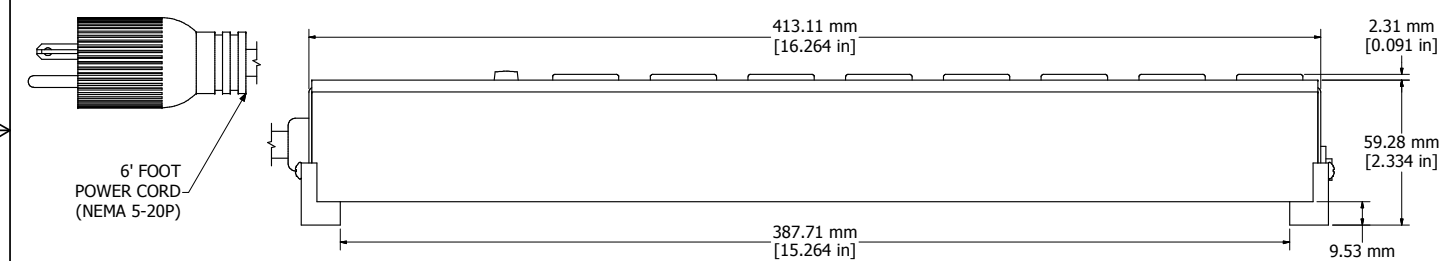


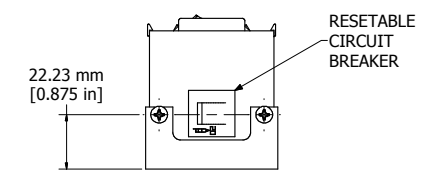
ASSEMBLY - VIEW FROM TOP



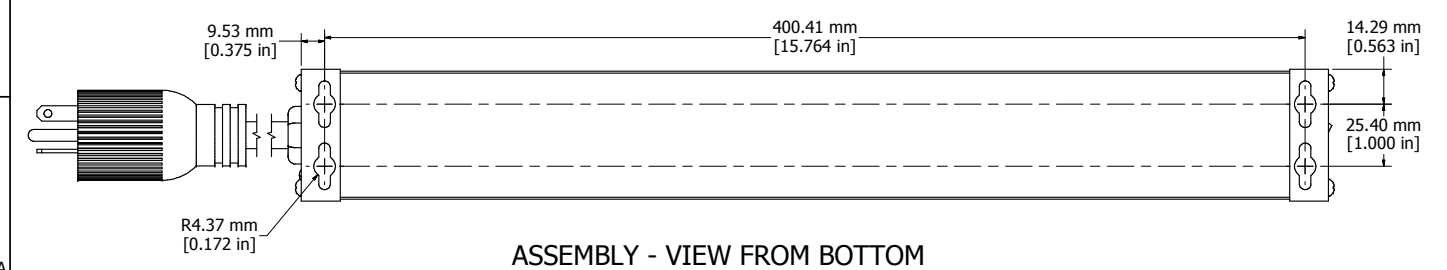
ISOMETRIC VIEW



ASSEMBLY - VIEW FROM SIDE



ASSEMBLY - VIEW FROM END



ASSEMBLY - VIEW FROM BOTTOM

1589H8**
Finish - Top - Black Painted Steel
Bottom - Aluminum Extrusion
Rated - 120 VAC, 60 Hz, 20 Amps
Approvals - CSA Certified Standards C22.2 (No. 21-95, 42-99)
- UL Listed, Standard UL1363
Cord Length
1589H8F1 - 6' Foot Power Cord (NEMA 5-20P)
1589H8G1 - 15' Foot Power Cord (NEMA 5-20P)

